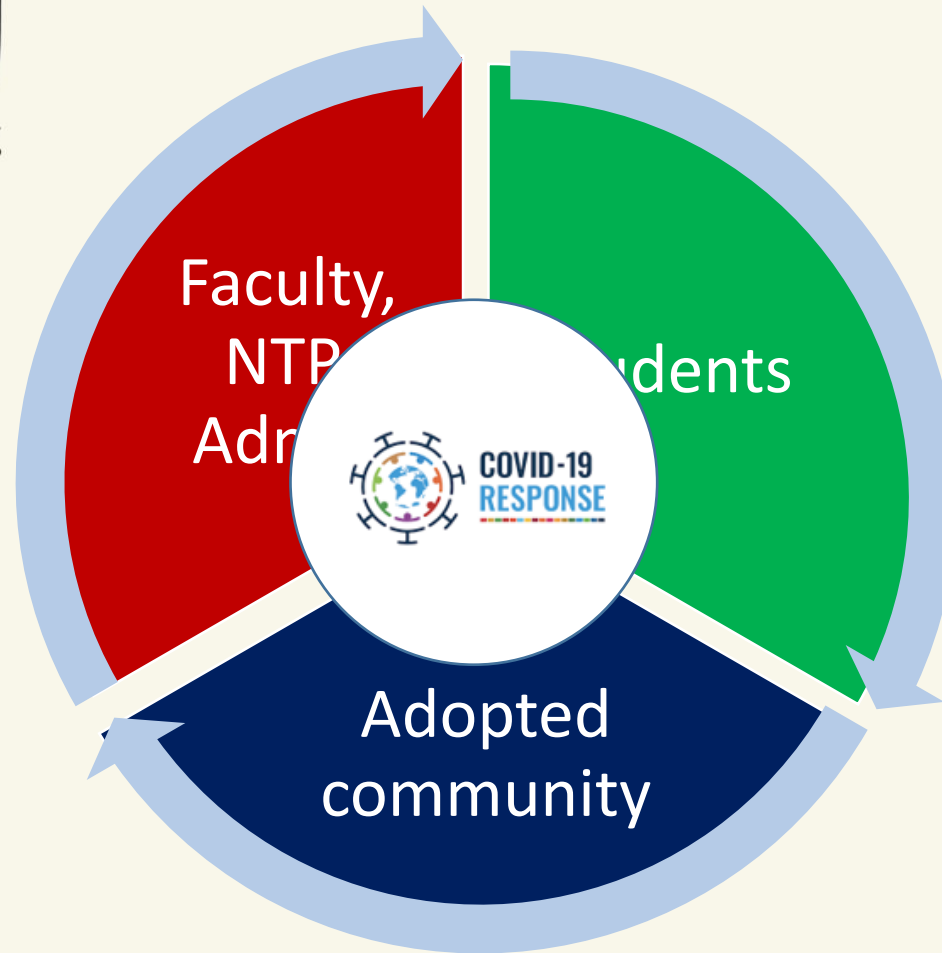




**LPU**  
LYCEUM OF THE PHILIPPINES UNIVERSITY  
MANILA • MAKATI • BATANGAS • LAGUNA • CAVITE • DAVAO



# Best/Better/Good or Work in Progress Practices

July 16, 2020





it takes a village to raise a child

**PROTECT, EDUCATE, PREPARE, SUSTAIN.....**



**LPU**  
LYCEUM OF THE PHILIPPINES UNIVERSITY  
MANILA • MAKATI • BATANGAS • LAGUNA • CAVITE • DAVAO



# PQA Assessor

- Preparatory Course
- Yearly calibration assessor's course
- When given an assignment
  - Team – diverse background, 4 to 7 members
  - Study the 50 page document
  - Industry briefing - to understand better the applicant
  - Independent Review, Consensus Review, Preliminary Visit Report, Visit, Post Visit, Judges' Presentation





**LPU**  
LYCEUM OF THE PHILIPPINES UNIVERSITY  
MANILA • MAKATI • BATANGAS • LAGUNA • CAVITE • DAVAO



# Lyceum of the Philippines University Profile

*A Hero's Legacy*





## His aim: Establishing Lyceum

Only school founded by a  
former President of the  
Philippines

*Occupied all branches of  
government*

Founded Lyceum of the  
Philippines in 1952

## Philosophy

*Veritas et Fortitudo, Pro Deo et  
Patria*

*Truth and Courage, for God and  
country*

**President Jose P. Laurel**  
(March 9, 1891 to Nov 6, 1959)





# LPU

LYCEUM OF THE PHILIPPINES UNIVERSITY  
MANILA • MAKATI • BATANGAS • LAGUNA • CAVITE • DAVAO



His focus: Expanding  
LPU's reach

Their Goal:  
Pursuing Quality Assurance



**Senator Sotero H. Laurel**  
(Sept 27, 1918- Sept 16, 2009)



**Atty. Roberto P. Laurel**  
**President**  
Manila, Makati & Cavite



**Dr. Peter P. Laurel**  
**President**  
Batangas, Laguna & Davao







# LPU

LYCEUM OF THE PHILIPPINES UNIVERSITY  
MANILA • MAKATI • BATANGAS • LAGUNA • CAVITE • DAVAO



1952



1966



2000



2008



.....2019



2003

INVESTORS  
IN PEOPLE



Manila • Makati • Cavite





**LPU**  
LYCEUM OF THE PHILIPPINES UNIVERSITY  
MANILA • MAKATI • BATANGAS • LAGUNA • CAVITE • DAVAO



# Vision

An internationally accredited university  
dedicated to innovation and excellence in the  
service of God and country



*Reviewed in the Aug 2019 MRPW  
Approved by Board of Trustees  
December 2015*







**LPU**  
LYCEUM OF THE PHILIPPINES UNIVERSITY  
MANILA • MAKATI • BATANGAS • LAGUNA • CAVITE • DAVAO



# Mission

The Lyceum of the Philippines University, espousing the ideals of Jose P. Laurel is committed to the following mission:

1. Advance and preserve knowledge by undertaking research and disseminating and utilizing the results.- **RESEARCH**
2. Provide equitable access to learning through relevant, innovative, industry-based and environment-conscious programs and services in the context of nationalism and internationalism.-**INSTRUCTION AND QUALITY SERVICES**
3. Provide necessary knowledge and skills to meet entrepreneurial development and the managerial requirements of the industry.-**INSTRUCTION**





**LPU**  
LYCEUM OF THE PHILIPPINES UNIVERSITY  
MANILA • MAKATI • BATANGAS • LAGUNA • CAVITE • DAVAO



# Mission

The Lyceum of the Philippines University, espousing the ideals of Jose P. Laurel is committed to the following mission: *cont'd*

4. Establish local and international linkages that will be the source of learning and growth of the members of academic - ***INSTITUTIONAL DEVELOPMENT AND INTERNATIONALIZATION***
5. Support a sustainable community extension program and be a catalyst for social transformation and custodian of Filipino culture and heritage. ***COMMUNITY EXTENSION***
6. Build a community of God-centered, nationalistic, environment conscious, and globally competitive professionals with wholesome values and attitudes.-***PROFESSIONALISM AND VALUES***





**LPU**  
LYCEUM OF THE PHILIPPINES UNIVERSITY  
MANILA • MAKATI • BATANGAS • LAGUNA • CAVITE • DAVAO



# Core Values

**L**ove of God

**P**rofessional Integrity

**U**nity

**N**ationalism

**J**ustice

**P**erseverance

**L**eadership







**LPU**  
LYCEUM OF THE PHILIPPINES UNIVERSITY  
MANILA • MAKATI • BATANGAS • LAGUNA • CAVITE • DAVAO

# Road Map author



## **Dr. Conrado E. Iñigo, Jr.**

Vice President for Academic Affairs  
Integrated Management Representative

## **Juran Medal Awardee 2014**

by the Philippine Society for Quality

bestowed to outstanding individuals who  
are catalysts or champions of process  
improvement through quality management





# LPU

LYCEUM OF THE PHILIPPINES UNIVERSITY  
MANILA • MAKATI • BATANGAS • LAGUNA • CAVITE • DAVAO

## Quality Assurance Roadmap

2024

An internationally  
accredited  
university

2019

2018

2016

2015

2014

2013

Malcolm Baldrige  
Education  
Framework

Investors In People

PQA

ISO 9001-2008  
Surveillance Audit  
1 Visit

SO 9001-2008  
Surveillance Audit  
2 Visit

2014 PMAP  
PPY

LEVEL 3  
MBA, MPA,  
Computer Science,  
Info Technology,  
Nursing, Tourism,  
Comp Engineering

LEVEL 4  
Liberal Arts, HRM,  
BA, Science

Renewal of CHED  
Autonomous,  
University Status

LEVEL 4  
LPU Institutional  
Accreditation

COD, COE Status BA,  
HRM, ITTM, CA,

LEVEL 3 –  
1<sup>st</sup> Reaccreditation  
for Accountancy  
and Customs  
Administration

ISO 9001-2008  
3<sup>rd</sup> Cycle  
Surveillance  
Audit Visit

ISO 14001  
Environmental  
Management  
System

ISO 9001-2008  
Surveillance  
ISO 14001-2008  
Audit 1 Visit

Investors In  
People Silver

INVESTORS  
IN PEOPLE

Compliance  
with  
International  
Accreditation  
Standards

IMS (ISO  
9001-2015,  
ISO 14001-  
2015  
4<sup>th</sup> Cycle  
Surveillance  
Audit Visit

Renewal of  
CHED  
Autonomous,  
University  
Status

Level 3 1<sup>st</sup> RA  
– CS, IT,  
MPA, MBA,  
Tsm

Level 4  
BA, IHM, LA

Level 3  
CA, Acc

THE-ICE  
Reaccreditation

IMS (ISO  
9001-2015,  
ISO 14001-  
2015  
4<sup>th</sup> Cycle  
Surveillance  
Audit Visit





**LPU**  
LYCEUM OF THE PHILIPPINES UNIVERSITY  
MANILA • MAKATI • BATANGAS • LAGUNA • CAVITE • DAVAO



# Institutional Accomplishments







**LPU**  
LYCEUM OF THE PHILIPPINES UNIVERSITY  
MANILA • MAKATI • BATANGAS • LAGUNA • CAVITE • DAVAO

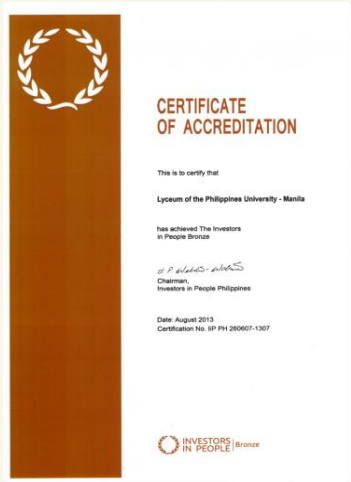


- Granted **Autonomous Status** by Commission on Higher Education (CHED)
  - October 24, 2019, 75 out of 1,963 or 3.82%
- Granted Institutional Quality Assurance through Monitoring and Evaluation Category A – Teaching (**IQuAME A-t**) Status by CHED, Aug 2006





**LPU**  
LYCEUM OF THE PHILIPPINES UNIVERSITY  
MANILA • MAKATI • BATANGAS • LAGUNA • CAVITE • DAVAO



- First HEI to be awarded IIP Bronze in 2013, in the Philippines



**6<sup>th</sup> Generation**

- 1<sup>st</sup> HEI to be Awarded in this Level, in 2014





## LYCEUM OF THE PHILIPPINES UNIVERSITY (LPU MANILA)

### PHILIPPINES' FIRST EDUCATIONAL INSTITUTION ACCREDITED INVESTORS IN PEOPLE (Bronze Award)



Lyceum of the Philippines University, an autonomous and internationally certified premiere academic institution, continues its pursuit of quality, efficient and effective service to its stakeholders.

During the People Management Association of the Philippines' (PMAP) General Membership Assembly held recently at the Hotel Inter-Continental, Makati City, the Investors in People Bronze Award Accreditation was awarded to LPU Manila, adding another laurel to the institution's Quality Assurance achievements.

The assessment validated LPU's 70 best practices out of the 196 good people management standards of Investors in People, qualifying for the IIP Bronze Award. Strengths and opportunities for improvement in people management are integrated in the tri-focal functions of LPU on instruction, research and community extension.

The IIP certification is another achievement of LPU as it strives to become a leading university in the Asia-Pacific region. Investors In People Philippines is its partner to continuously develop a competent, engaged and excellent workforce to serve all its stakeholders.



L-R: LPU HR Director Myrna Reyes, IIP Phils. CEO Gerry Plana, LPU VP-Finance Sarah Lopez, IIP Phils. Chairman Janet Webster-Watson, LPU VP-Academic Affairs Dr. Conrado Iflgo Jr., LPU President Roberto Laurel, PMAP President Grace Sorongon, PMAP VP Robert Policarpio, IIP Phils. Corp. Sec. Chit Ventura, LPU Director Sandra Recto, LPU Exec. Director Ma. Christina Aquino, LPU HR Officer Hermielet Hernando, LPU L&D Officer Grace Neturada



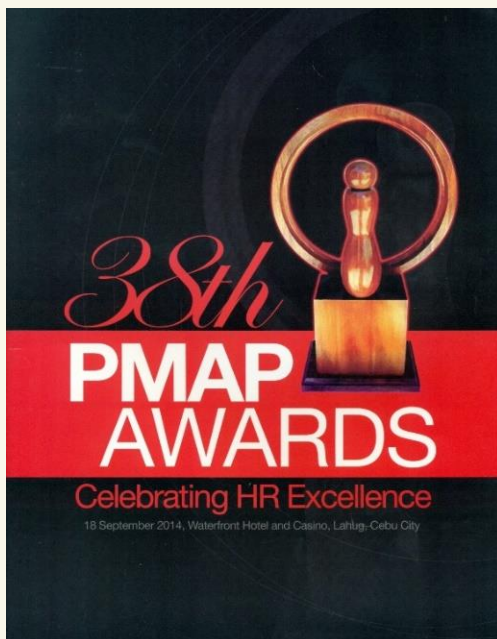


**LPU**  
LYCEUM OF THE PHILIPPINES UNIVERSITY  
MANILA • MAKATI • BATANGAS • LAGUNA • CAVITE • DAVAO

**PMAP**



# 2014 People Program of the Year







**LPU**  
LYCEUM OF THE PHILIPPINES UNIVERSITY  
MANILA • MAKATI • BATANGAS • LAGUNA • CAVITE • DAVAO



# Investors in People Awards 2018

## Excellence in Corporate Social Responsibility

### Leader of the Year





**LPU**  
LYCEUM OF THE PHILIPPINES UNIVERSITY  
MANILA • MAKATI • BATANGAS • LAGUNA • CAVITE • DAVAO



# International Management System

- **Quality Management System - ISO 9001:2015**

- Covers academic and administrative services
- Manila, Makati & Cavite campuses
- Since 2009



- **Environmental Management System – ISO 14001:2015**

- Manila, Makati & Cavite campuses
- 1<sup>st</sup> HEI to be certified in this standard
- Since 2015





# LPU

LYCEUM OF THE PHILIPPINES UNIVERSITY  
MANILA • MAKATI • BATANGAS • LAGUNA • CAVITE • DAVAO



Microsoft Schools are focused on leading and learning

- how to transform education and integrate technology into their classrooms
- explore Microsoft solutions, programs or devices

LPU is one of five (5) schools in the Philippines







**LPU**  
LYCEUM OF THE PHILIPPINES  
MANILA • MAKATI • BATANGAS •



**LPU**  
LYCEUM OF THE PHILIPPINES UNIVERSITY  
MANILA • MAKATI • BATANGAS • LAGUNA • CAVITE



## THE PHILIPPINES' FIRST PRIVATE NON-SECTARIAN QS STARS™ RATED UNIVERSITY

Lyceum of the Philippines University, with campuses in Manila, Makati, Batangas, Laguna and Cavite, was rated as a nationally recognized university that has begun to attract international recognition, maintaining a reputable level of research and forming a roster of graduates attractive to employers.

- Recipient of the PHILIPPINE QUALITY AWARD
- Certified ISO 9001 and ISO 14001
- Granted Full International Accreditation for Hotel & Restaurant Management and Tourism by International Centre of Excellence in Tourism and Hospitality Education
- Granted Autonomous Status
- Granted Centers of Excellence for Hotel and Restaurant Management, Tourism, Customs Administration, Business Administration, and Medical Technology
- Granted Center of Development for Computer Science
- Granted Institutional Accredited Status
- Certified by Investors-in-People International Award

[www.lpu.edu.ph](http://www.lpu.edu.ph)





**LPU**  
LYCEUM OF THE PHILIPPINES UNIVERSITY  
MANILA • MAKATI • BATANGAS • LAGUNA • CAVITE



## PHILIPPINE QUALITY AWARD

Recognition for Commitment to Quality Management

*conferred on*

**LYCEUM OF THE PHILIPPINES UNIVERSITY  
Manila**



Photo (L-R): DAP Pres. Antonio D. Kalaw, DTI Sec. Gregory L. Domingo, Pres. Benigno S. Aquino III, LPU Pres. Roberto P. Laurel, LPU VP for Finance Sarah L. Lopez and LPU VP for Academic Affairs Conrado E. Inigo, Jr.

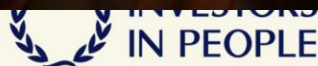
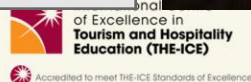
### LPU Manila Quality Assurance Achievements

- Granted Autonomous Status by Commission on Higher Education (CHED)
- Certified ISO 9001:2008 by Societe Generale de Surveillance
- Awarded Center of Development for Hotel & Restaurant Management (HRM) by Commission on Higher Education (CHED)
- Awarded Center of Development for Business Administration by Commission on Higher Education (CHED)
- Granted IQAME Category A Teaching University by Commission on Higher Education (CHED)
- Deputized Expanded Tertiary Education Equivalency and Accreditation Program (ETEEAP) by Commission on Higher Education (CHED)
- Granted Level 3 Reaccredited Status for Hotel & Restaurant Management, Business Administration, Liberal Arts and Science Programs by the Philippine Association of Colleges and Universities on Accreditation (PACUCOA) and certified by Federation of Accrediting Agencies in the Philippines (FAAP)
- First University to be granted Level 3 Reaccreditation Status for HRM Program by Philippine Association of Colleges and Universities on Accreditation (PACUCOA) and certified by Federation of Accrediting Agencies in the Philippines (FAAP)
- All undergraduate programs are accredited by Philippine Association of Colleges and Universities on Accreditation (PACUCOA) and certified by Federation of Accrediting Agencies in the Philippines (FAAP)
- First University in the Philippines to be granted Full International Accreditation for Hotel and Restaurant Management and Tourism (Undergraduate and Graduate Programs) by International Centre of Excellence for Tourism and Hospitality Education (THE-ICE)
- Philippines' First Educational Institution certified Investors in People (Bronze Award)

LPU Batangas: Recipient of Philippine Quality Award 2012

**Taking the Lead**

[www.lpu.edu.ph](http://www.lpu.edu.ph)







**LPU**  
LYCEUM OF THE PHILIPPINES UNIVERSITY  
MANILA • MAKATI • BATANGAS • LAGUNA • CAVITE • DAVAO



**CLARO M. RECTO**  
ACADEMY OF ADVANCED STUDIES



**COLLEGE OF**  
**ARTS AND SCIENCES**



**LPU**

LYCEUM OF THE PHILIPPINES UNIVERSITY  
MANILA • MAKATI • BATANGAS • LAGUNA • CAVITE

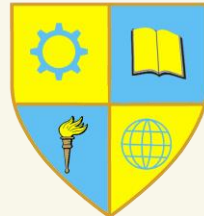
**COLLEGE OF LAW**



**COLLEGE OF TECHNOLOGY**



**COLLEGE OF**  
**BUSINESS ADMINISTRATION**



**COLLEGE OF INTERNATIONAL TOURISM**  
**AND HOSPITALITY MANAGEMENT**



**COLLEGE OF**  
**INTERNATIONAL RELATIONS**



Lyceum of the Philippines University

## ***Academic Achievements***



Manila • Makati • Cavite

**ACCREDITED MEMBER**



**INVESTORS**  
**IN PEOPLE**





**LPU**  
LYCEUM OF THE PHILIPPINES UNIVERSITY  
MANILA • MAKATI • BATANGAS • LAGUNA • CAVITE • DAVAO



## Manila Programs



- 8 Academic Units
- Programs
  - Senior High School
  - 13 Undergraduate programs (1 NA)
  - 8 Masters programs (2 NA)
  - 4 Doctoral programs







**LPU**  
LYCEUM OF THE PHILIPPINES UNIVERSITY  
MANILA • MAKATI • BATANGAS • LAGUNA • CAVITE • DAVAO



College	CENTERS OF EXCELLENCE
CBA	Customs Administration
	Business Administration
CITHM	International Hospitality Management
	International Travel & Tourism Management



## Level 4 Institutional Accreditation



Manila • Makati • Cavite





**LPU**  
LYCEUM OF THE PHILIPPINES UNIVERSITY  
MANILA • MAKATI • BATANGAS • LAGUNA • CAVITE • DAVAO



College	Deputized ETEEAP provider
<b>CAS</b>	<i>Foreign Service, Journalism, Legal Studies, Mass Communication</i>
<b>CBA</b>	<i>Business Administration</i>
<b>COT</b>	<i>Information Technology, Computer Engineering</i>
<b>CITHM</b>	<i>International Hospitality Management, International Travel &amp; Tourism Management</i>



Manila • Makati • Cavite



**INVESTORS  
IN PEOPLE**





**LPU**  
LYCEUM OF THE PHILIPPINES UNIVERSITY  
MANILA • MAKATI • BATANGAS • LAGUNA • CAVITE • DAVAO



# Program Accreditation Achievement

Level	Undergraduate Program
Level 4	Science, Liberal Arts, Business Administration , Hospitality Management
Level 3 1 <sup>st</sup> RA	Information Technology, Computer Science, Computer Engineering, Nursing, Tourism Management
Level 3	Accountancy, Customs Administration



% of HEIs with Accredited Programs = **29.99%** *(based on CHED data as of July 2019)*







**LPU**  
LYCEUM OF THE PHILIPPINES UNIVERSITY  
MANILA • MAKATI • BATANGAS • LAGUNA • CAVITE • DAVAO



Microsoft Schools are focused on leading and learning

- how to transform education and integrate technology into their classrooms
- explore Microsoft solutions, programs or devices

LPU is one of five (5) schools in the Philippines



First in the Philippines

*Excellence is our way of life!*

# International Accreditation conferred on **LYCEUM OF THE PHILIPPINES UNIVERSITY** Manila • Batangas • Laguna • Cavite for excellence in Tourism and Hospitality Education

## LPU Excellence

Lyceum of the Philippines University is pleased to announce that its College of International Tourism & Hospitality Management met the stringent assessment criteria of THE-ICE Standards of Excellence and is now a proud Accredited Member of the International Centre of Excellence in Tourism and Hospitality Education (THE-ICE).

The application was assessed and site-audited by two highly qualified auditors of THE-ICE Assessment Panel, namely Prof. David Harrison and Dr. Andy Nazarechuk. LPU was acknowledged and commended most notably for: the conducive learning environment, excellent culinary and teaching facilities, excellent leadership, efficient systems and administrative procedures, and quality internships and placements. THE-ICE auditors also recognized LPU's strengths, namely: the campus' dynamism and the desire to continually progress and excel, student enthusiasm and staff/student relations, leadership and teamwork, the quality values displayed and the exemplary organizational culture.

Internationally recognized, THE-ICE ([www.the-ice.org](http://www.the-ice.org)) is an independent not-for-profit accreditation organization, focusing on the recognition, development and the promotion of excellence in tourism, hospitality, event and culinary arts education, training and research programmes. Its membership includes some 35 world-leading universities, private high and vocational colleges from 16 countries, including but not limited to:

- Australian School of Management
- Blue Mountains International Hotel Management School
- Emirates Academy of Hospitality Management
- Griffith University
- The Hotel School Sydney
- The University of Queensland
- William Angliss Institute



- William Blue College of Hospitality Management
- BMC University of Applied Sciences, Krefeld
- MCI Management Center, Innsbruck
- The University of the South Pacific
- Dait Thani College
- Free University of Bozen, Bolzano
- Stenden University of Applied Sciences
- Republic Polytechnic
- Taylor's University
- University of Applied Sciences, HTW Chur

## LPU Achievements

- Granted Autonomy Status by CHED
- Certified ISO 9001:2008
- Awarded Center of Excellence in Hotel and Restaurant Management by CHED
- Awarded Center of Development in Tourism by CHED
- 1st university granted Level 3 Reaccreditation Status by PACU/COA and certified by FAAP for Hotel & Restaurant Management and Tourism Programs
- Awarded Innovation-in-People Certification and recipient of the PHILIPPINE QUALITY AWARD 2012
- Granted IQAWE Category A Teaching University by CHED
- Designated Expanded Tertiary Education Equivalency and Accreditation Program (ETEEAP) by CHED



THE BAYLEAF  
INN

The Bayleaf Inn, LPU's teaching & research hotel, was awarded Gold Circle by Agoda, and Traveler's Choice Ranked No. 1 Hotel in Manila by TripAdvisor.



For more information, visit [www.lpu.edu.ph](http://www.lpu.edu.ph)

## ACCREDITED MEMBER



International Centre  
of Excellence in  
Tourism and Hospitality  
Education (THE-ICE)



Accredited to meet THE-ICE Standards of Excellence





**LPU**  
LYCEUM OF THE PHILIPPINES UNIVERSITY  
MANILA • MAKATI • BATANGAS • LAGUNA • CAVITE • DAVAO



# Journey of COVID 19, ECQ/MECQ and LPU







# LPU

LYCEUM OF THE PHILIPPINES UNIVERSITY  
MANILA • MAKATI • BATANGAS • LAGUNA • CAVITE • DAVAO



## NO PUBLIC TRANSPORT IN LUZON AMID ENHANCED COMMUNITY QUARANTINE

MARCH 17, 2020 TO APRIL 13, 2020

- Train systems, buses, jeeps and other forms of mass transportation will not be allowed to operate in Luzon.
- Residents of Luzon may only be allowed to walk or use their private vehicles when buying basic necessities in public markets, groceries and convenience stores.
- The general rule is to stay at home. If you need to go out to buy basic goods, only 1 person is allowed.
- Operations of Transport Network Vehicle Services (TNVS), such as Grab, Angkas, and Joyride, are suspended.
- Local government units can provide transportation for those who are required to report to work, such as healthcare workers and those in the BPO industry.
- BPO companies are also required to provide temporary accommodation arrangements to their employees by March 18, 2020.

SOURCE: MALACANANG PRESS CONFERENCE

PHILIPPINE  
STAR

## Mar 16



## April 9





# AREA CLASSIFICATION AND INTERVENTIONS

## ECQ

### CRITICAL ZONE (CRZ)

- NO MOVEMENT REGARDLESS OF AGE & HEALTH STATUS
- MINIMAL ECONOMIC ACTIVITY EXCEPT FOR UTILITY SERVICES (I.E., FOOD, POWER, WATER ETC) AND CRITICAL ECONOMIC SECTOR
- NO TRANSPORTATION ACTIVITY EXCEPT FOR UTILITY SERVICES
- SUSPENSION OF PHYSICAL CLASSES

## MODIFIED ECQ

### CONTAINMENT ZONE (CZ)

- LIMITED MOVEMENT WITHIN ZONE FOR OBTAINING ESSENTIAL SERVICES & WORK
- OPERATION OF SELECTED MANUFACTURING AND PROCESSING PLANTS UP TO MAXIMUM OF 50% WORKFORCE
- LIMITED TRANSPORTATION SERVICES FOR ESSENTIAL GOODS & SERVICES
- SUSPENSION OF PHYSICAL CLASSES

## GCQ

### BUFFER ZONE (BZ)

- LIMITED MOVEMENT TO SERVICES & WORK WITHIN BZ AND OZ
- OPERATION OF GOVERNMENT OFFICES & INDUSTRIES UP TO MAXIMUM OF 75% WORKFORCE
- LIMITED TRANSPORTING SERVICES TO SUPPORT GOVERNMENT AND PRIVATE OPERATIONS
- FLEXIBLE LEARNING ARRANGEMENTS AT LIMITED CAPACITIES TO CATER TO STUDENTS

## MODIFIED GCQ

### OUTSIDE BUFFER ZONE (OBZ)

- PERMISSIVE SOCIO-ECONOMIC ACTIVITIES WITH MINIMUM PUBLIC HEALTH STANDARDS

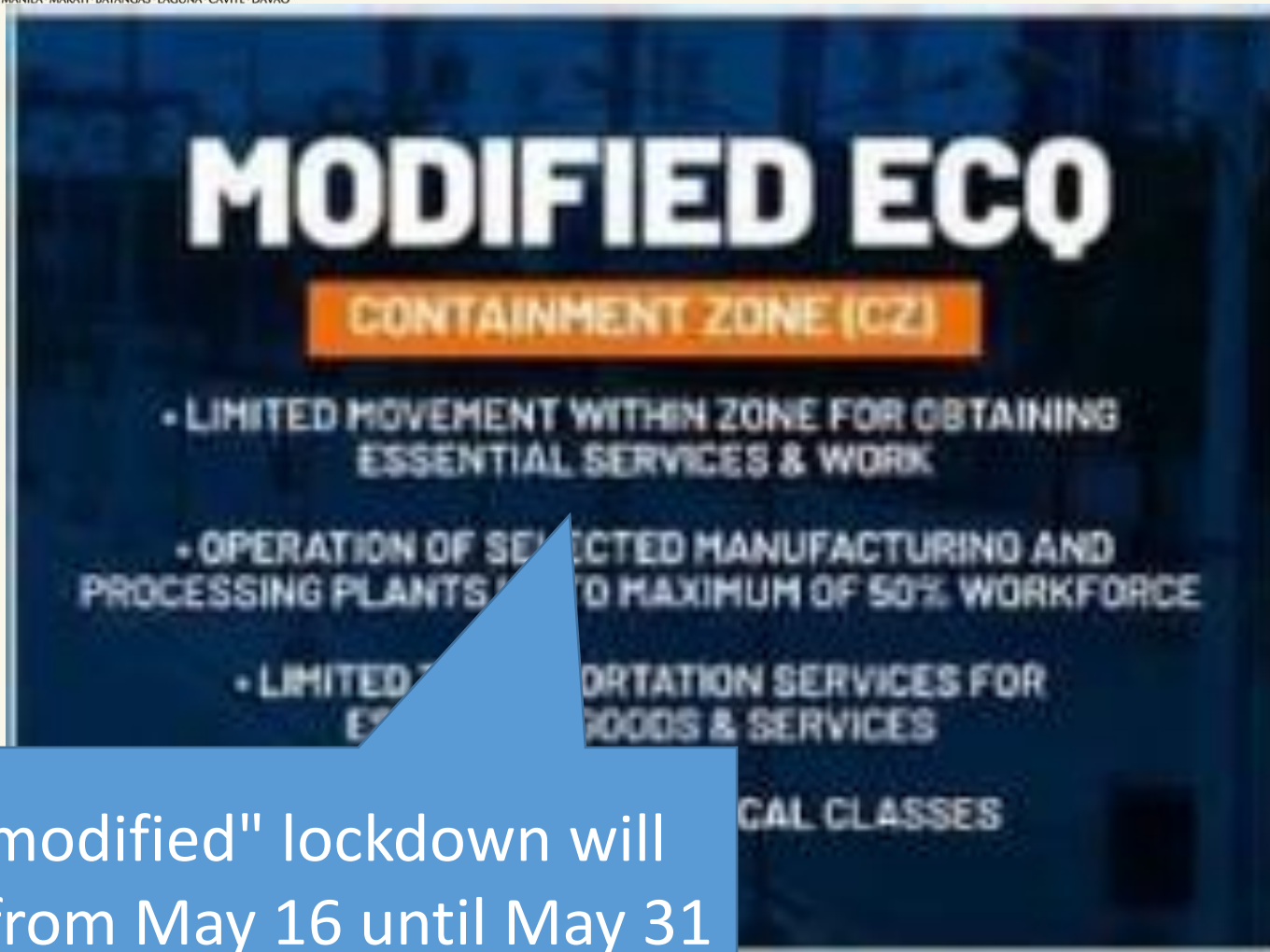
May 12





# LPU

LYCEUM OF THE PHILIPPINES UNIVERSITY  
MANILA • MAKATI • BATANGAS • LAGUNA • CAVITE • DAVAO



A "modified" lockdown will stay from May 16 until May 31 in Metro Manila, neighboring Laguna province, and Cebu City in the Visayas, .....







**LPU**  
LYCEUM OF THE PHILIPPINES UNIVERSITY  
MANILA • MAKATI • BATANGAS • LAGUNA • CAVITE • DAVAO



**STAY HOME.  
STAY SAFE.**

ENHANCED COMMUNITY  
QUARANTINE IN LUZON IS  
**EXTENDED** UNTIL  
APRIL 30, 2020



**LPU**  
LYCEUM OF THE PHILIPPINES UNIVERSITY  
MANILA • MAKATI • BATANGAS • LAGUNA • CAVITE • DAVAO



Manila • Makati • Cavite





# LPU

LYCEUM OF THE PHILIPPINES UNIVERSITY  
MANILA • MAKATI • BATANGAS • LAGUNA • CAVITE • DAVAO



**GCQ Guidelines**

**Under the GCQ, movement of all persons shall be limited to accessing essential goods and services, and for work in offices or industries permitted to operate.**

**Movement for leisure purposes is not allowed.**

Source: Executive Order No.112, s.2020 and IATF Resolution No.30, s.2020

**2** #WeHealAsOne #COVID19PH #LagingHandaPH

**GCQ Guidelines**

**Physical classes shall be suspended for the duration of the GCQ.**

**However, Higher Education Institutions may:**

- 1. Hold classes through flexible learning arrangements to finish AY 2019-2020**
- 2. Operate at a limited capacity to receive students' requirements**
- 3. Prepare and issue credentials to students.**

**This is all subject to the guidelines as may be issued by the CHED.**

Source: Executive Order No.112, s.2020 and IATF Resolution No.30, s.2020

**12** #WeHealAsOne #COVID19PH #LagingHandaPH @pcoe.gov

**GCQ Guidelines**

**NOT ALLOWED TO GO OUT**

**Persons below 21 years old**

**Persons 60 years old and above**

**Persons with immunodeficiency, morbidities, or other health risks**

**Pregnant women**

**Person who resides with the mentioned.**

**Not permitted when obtaining essential goods and services.**

Source: Executive Order No.112, s.2020 and IATF Resolution No.30, s.2020

#WeHealAsOne #COVID19PH #LagingHandaPH @pcoe.gov





**LPU**  
LYCEUM OF THE PHILIPPINES UNIVERSITY  
MANILA • MAKATI • BATANGAS • LAGUNA • CAVITE • DAVAO



# Societal Responsibilities







**LPU**  
LYCEUM OF THE PHILIPPINES UNIVERSITY  
MANILA • MAKATI • BATANGAS • LAGUNA • CAVITE • DAVAO



# 1. Leadership (120 pts)

## 1.1 Senior Leadership (70 pts)

## 1.2 Governance and Societal Responsibilities (50 pts)

a. Governance System

b. Legal and Ethical Behavior

c. Societal Responsibilities





## 1.2 Governance and Societal Responsibilities

### c. Societal Responsibilities

- (1) **Societal Well-Being** HOW do you consider societal well-being and benefit as part of your strategy and daily operations? HOW do you contribute to societal well-being through your environmental, social, and economic systems?
- (2) **Community Support** HOW do you actively support and strengthen your KEY communities? What are your KEY communities? HOW do you identify them and determine areas for organizational involvement, including areas that leverage your CORE COMPETENCIES? HOW do your SENIOR LEADERS, in concert with your WORKFORCE, contribute to improving these communities?

1.2c. Areas of societal contributions might include your efforts to improve the environment (e.g., collaboration to conserve the environment or natural resources); strengthen local community services, education, health, and emergency preparedness; and improve the practices of trade, business, or professional associations.

1.2c. Some charitable organizations may contribute to society and support their key communities totally through mission-related activities. In such cases, it is appropriate to respond with any “extra efforts” through which you support these communities.





# Evaluation

Process	Examples
Approach	Organization, Strategic Plans, Operations Plans, Activities and Tasks, Lead unit in LPU is Center for Outreach and Service Learning (COSeL) and Quality Circles (QCs)
Deployment	Ingrained in all units and members, regular monitoring of output
Learning	Continuous improvement cycle (PDCA), innovation, new skills and knowledge i.e. work in progress
Integration	Support LPU's VMO





**LPU**  
LYCEUM OF THE PHILIPPINES UNIVERSITY  
MANILA • MAKATI • BATANGAS • LAGUNA • CAVITE • DAVAO



# LPU's Action/Reaction





**LPU**  
LYCEUM OF THE PHILIPPINES UNIVERSITY  
MANILA • MAKATI • BATANGAS • LAGUNA • CAVITE • DAVAO



# Implications on LPU community

- Private, non-sectarian educational institution offering SHS and Higher Education Programs
- GCQ
  - Less than 21 years old (students)
  - 60 or more (faculty, NTP, Admin)
- Identification of Non-essential and essential units, WFH and 3 day workweek
- No F2F class instruction
- Work suspended from March 14
- Work from Home, Remote Learning Activities





## 1.2c (1) Societal Well-being

Areas	Activities
environment	<p>ISO EMS</p> <ul style="list-style-type: none"><li>• Use of refillable containers placed in strategic locations within the campus</li></ul>
strengthen local community services	<ul style="list-style-type: none"><li>• Support for Barangays near LPU campus</li></ul>





# LPU

LYCEUM OF THE PHILIPPINES UNIVERSITY  
MANILA • MAKATI • BATANGAS • LAGUNA • CAVITE • DAVAO



INVESTORS  
IN PEOPLE





## 1.2c (1) Societal Well-being

Areas	Activities
strengthen local community services	<ul style="list-style-type: none"><li>Internal stakeholders<ul style="list-style-type: none"><li>Students<ul style="list-style-type: none"><li>Local<ul style="list-style-type: none"><li>checked on their status;</li><li>athletes were assisted in going home to province.</li><li>Athletes who were not able to go were provided board and lodging in dormitories.</li><li>Thanksgiving mass for COL Bar Passers</li><li>Refund for “unused portion of miscellaneous fees”</li></ul></li><li>International –<ul style="list-style-type: none"><li>conducted a survey to check status</li><li>Assisted them re: visa and other requirements</li><li>Coordinated food c/o barangay</li></ul></li></ul></li></ul></li></ul>



## Marcelino Twins set aside their one month salary to share blessings in Olongapo City



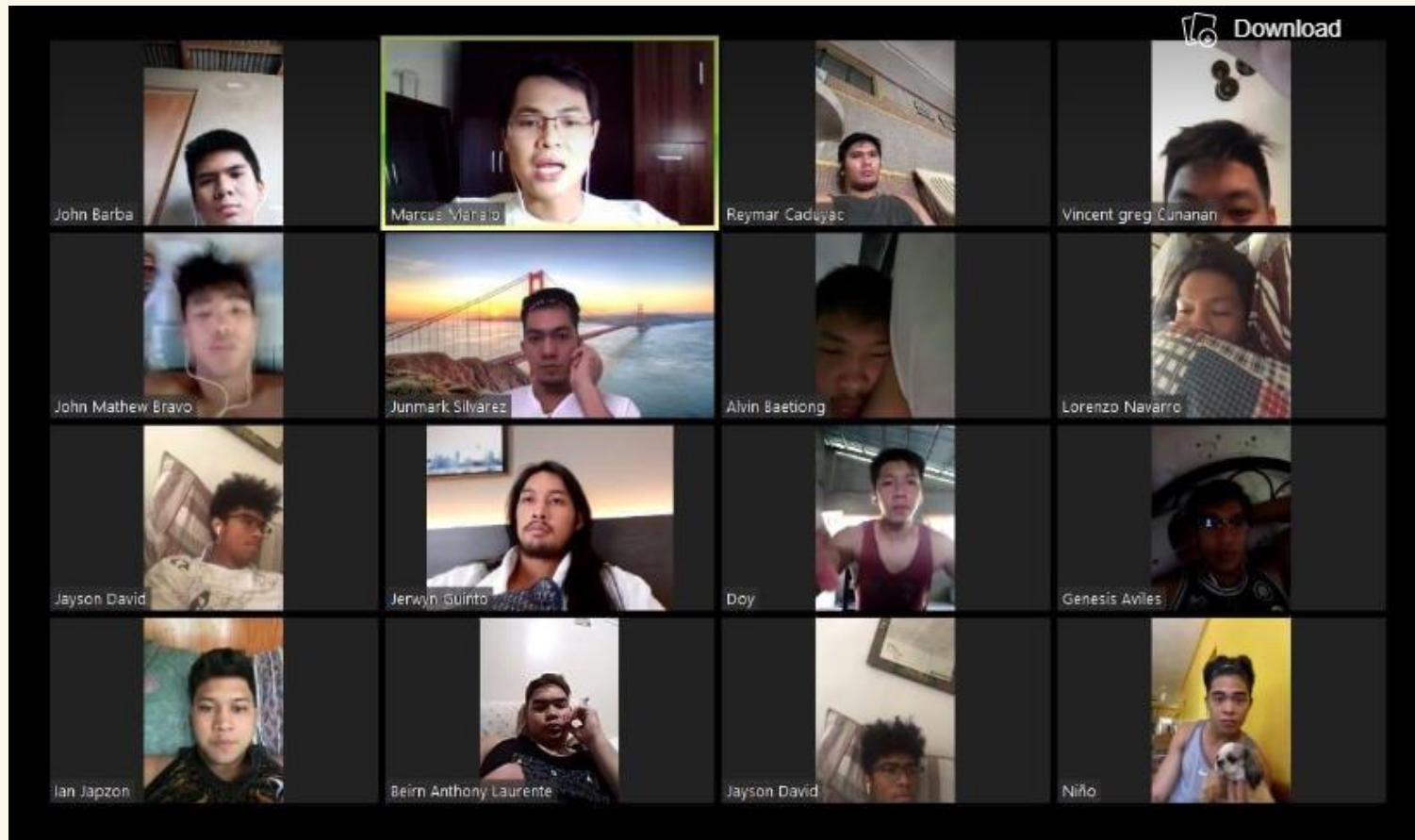




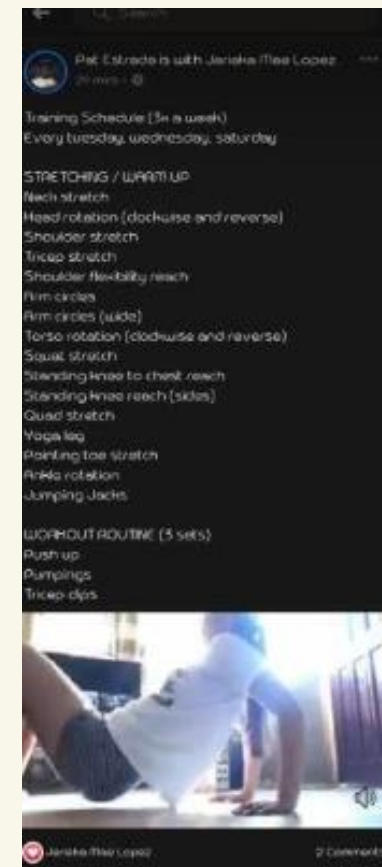
**LPU**  
LYCEUM OF THE PHILIPPINES UNIVERSITY  
MANILA • MAKATI • BATANGAS • LAGUNA • CAVITE • DAVAO



# personal philosophy and meditation exercise with the coaches.



## Workchat, Workplace Monitoring (FB equivalent, formed groups)







**LPU**  
LYCEUM OF THE PHILIPPINES UNIVERSITY  
MANILA • MAKATI • BATANGAS • LAGUNA • CAVITE • DAVAO



# Foreign Students and Monitoring Update



## LPU FOREIGN STUDENTS

LPU cares for our foreign students. We wish to know your current situation during the Enhanced Community Quarantine. If you need assistance, we will coordinate with an LPU contact to help you. You can reach Ms. Jobelle at this mobile number to this email address [internationalaffairs@lpu.edu.ph](mailto:internationalaffairs@lpu.edu.ph)

\* Required

1. NAME \*

Enter your answer



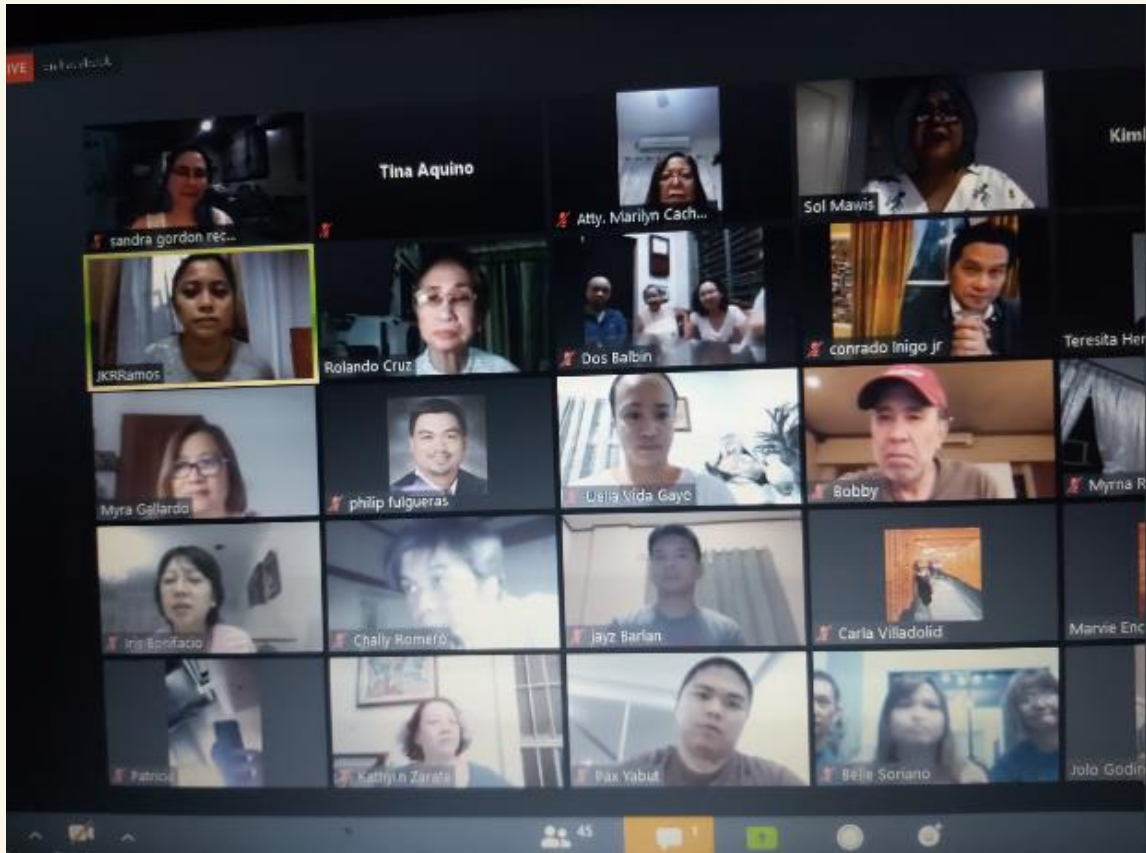




**LPU**  
LYCEUM OF THE PHILIPPINES UNIVERSITY  
MANILA • MAKATI • BATANGAS • LAGUNA • CAVITE • DAVAO



# COL Bar Passers



## 1.2c (1) Societal Well-being

Areas	Activities
strengthen local community services	<ul style="list-style-type: none"> <li>• Non- teaching personnel               <ul style="list-style-type: none"> <li>• Agency staff – received salaries as follows                   <ul style="list-style-type: none"> <li>• 100% of salary for March;</li> <li>• 80% of salary for April;</li> <li>• 50% of salary for May + FA of 2,200 per employee</li> </ul> </li> <li>• Probationary – no renewal</li> <li>• Voluntary donation from everyone                   <ul style="list-style-type: none"> <li>• <b>Tulong Lycean for LP agency-hired employees</b> - to help the agency staff and was able to raise 348+K /158 agency</li> <li>• Employee who had a medical condition that needed an operation to remove a cyst compressing the spine, raised 328+ K</li> </ul> </li> </ul> </li> </ul>

## 1.2c (1) Societal Well-being

Areas	Activities
strengthen local community services	<ul style="list-style-type: none"> <li>• Non- teaching personnel               <ul style="list-style-type: none"> <li>• Regular employees                   <ul style="list-style-type: none"> <li>• Work from Home                       <ul style="list-style-type: none"> <li>• March – full pay</li> <li>• April &amp; May – 3 days on duty, 2 days forced leave</li> <li>• June – used VL/SL</li> <li>• July – prorated 13<sup>th</sup> month; for those essential/WFH – 3 days on duty</li> </ul> </li> </ul> </li> <li>• Attendance link, with weekly work accomplishment reports</li> <li>• W&amp;L Development Programs                   <ul style="list-style-type: none"> <li>• Physical, mental, and emotional program</li> </ul> </li> </ul> </li> </ul>

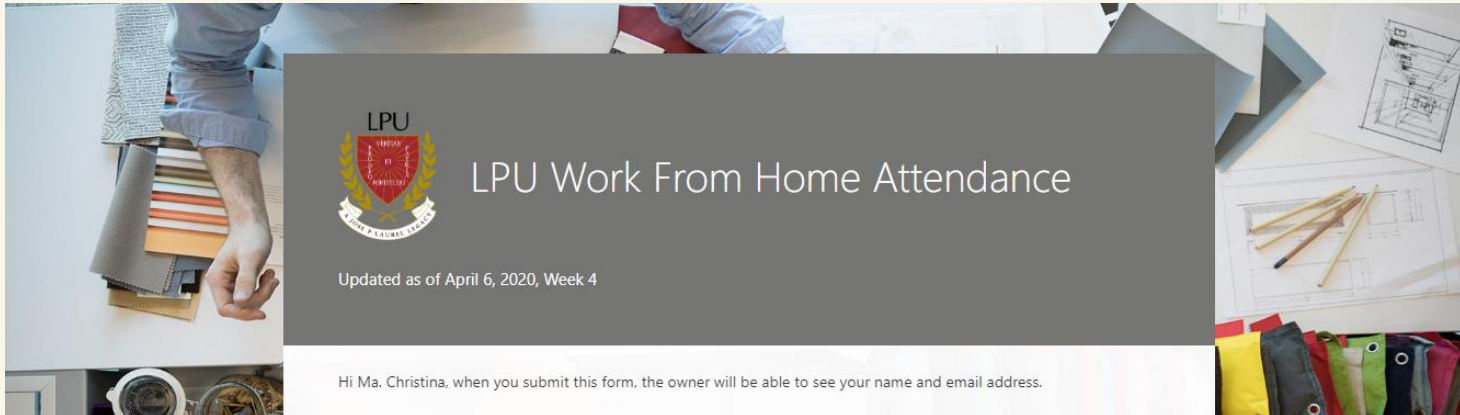




**LPU**  
LYCEUM OF THE PHILIPPINES UNIVERSITY  
MANILA • MAKATI • BATANGAS • LAGUNA • CAVITE • DAVAO



# WFH Attendance Link



Hi Ma. Christina, when you submit this form, the owner will be able to see your name and email address.

Dear Unit Head,  
Greetings from DLS!

Please find attendance log input of your team members for the week covering March 30 to April 3, 2020. Hope you can note the remarks section.

**Sample**

Employee	Mar 30	Mar 31	Apr 1	Apr 2	Apr 3	Remarks
John Doe	Log In	Log In	Log In	Log In	Log In	
Jane Smith	Log In	Log In	Log In	Log In	Log In	
...	...	...	...	...	...	...

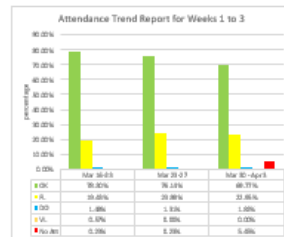
\*Click the image to view full screen.

- Noted that some employees logged only once, either in or out in some days. Made the corresponding adjustments in either log in or out.
- If there are several no logged in/out, and no PL indicated, we choose one day for PL.
- If there are employees who are logged in the whole 5 days (other than the unit head), Marcus will change one day of their logged in/out to a PL mark, based on remarks given by HRD. Please note the remarks section.
- May we request all unit heads to email Marcus re: the PL for each of their team member as we will continue with the WFH attendance link till April 30.

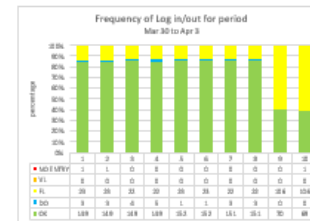
Please see below the attendance of your department from last week. Kindly encourage your employees to log in even on forced leaves (no need to accomplish anything) but it is more to monitor their wellness on that day.

Unit Head	Unit Name	Employee	Mar 30	Mar 31	Apr 1	Apr 2	Apr 3	Remarks
John Doe	Unit A	Jane Smith	Log In	Log In	Log In	Log In	Log In	
...	...	...	...	...	...	...	...	...

The attendance trend for the last 3 weeks is shown below.



Please find the frequency levels of those who log in/out (OK), who are on forced leaves (PL), Day Off (DO), Vacation leaves and those who haven't logged in/out (no entries). Please review your list of employees who continuously have not logged in/out and advise them about this procedure.



The logged in/out per unit is found below.



If you have any concerns re: this report, please advise HRD (Ma. Leticia) and DLS (Marcus) so we can review the records.

Some announcements:

- HRD Announcement for Week 4

- In observance of Holy Week, there will be no log in/out on Wednesday, April 8 to 10.
- Log in/Log out will resume next Monday, April 13.

## 2. ~~HRD~~ Remarks Submission

- WFH agreement. Please request your unit members to process this so and for you to sign the agreement before asking the employees to submit to HRD. A link will be sent where employees can upload their completed agreements.
- WFH Engagement activities thru WorkplaceEmail. Please encourage your team members to respond to these activities. It has several items:
  - Employee Engagement Survey - <https://lpuhrd.com/employee-survey/>
  - Work from Home/Homes Quarantine Bingo
  - Guess the Movie
  - Win in All Areas [at-Work](#) Life
  - Share Your Thoughts: What Does COVID teach you?

Thank you!



Manila • Makati • Cavite

ACCREDITED MEMBER



Accredited to meet THE-ICE Standards of Excellence



INVESTORS  
IN PEOPLE



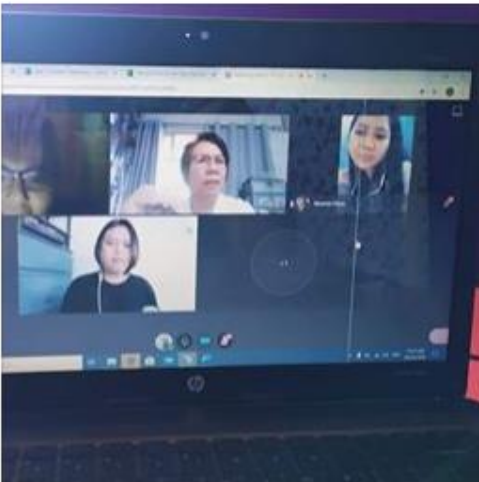



# Workplan Monitoring

A	B	C	D	E	F	G	H
Unit	Department of Linkages and Standards						
Name	Noemie Cinco						
Type of Appt	Fixed Term						
Schedule	Monday - Thursday						
		Mon	Tue				
		Mar-16	Mar-17				
Activity							
1 Daily Activities							
respond to attendance link		Completed	Completed	Comp			
respond to all emails		Completed	Completed	Comp			
visit LPU FB page for new announcements		Completed	Completed	Comp			
respond and update DLS IAO group							
acknowledge receipt and reading of							
respond email on University Policy							
Respond to TIBFI inquiries, emails at							
2 Sent Telecommuting/WFH Agreement							
Modified Data Privacy in some of the D							
updates of DPO							
registered all organizations in the onlin							
indicate the seminars in LPU and webin							

**Ma. Christina G. Aquino** is with John Marcus Olegario and 3 others.  
April 6 at 12:34 PM · 📍

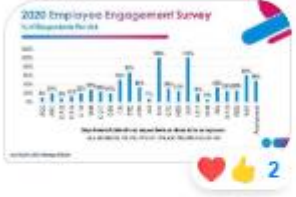
Start of 4th week of ECQ, 16th day of Work from Home, nice to see LPU DLS IAO team virtually...all safe and good! 🎧 📱 🧑 🖥️...and following ECQ guidelines! 🍌 🍌 🍌



**LPU DLS& IAO**  
Active now

Noemie

2020 Employee Engagement Survey  
% of Responses Per Qtr



100 🙌

✓ Seen by Jobelle, Hua Mei, John Marcus

15 HABITS OF HIGHLY EFFECTIVE HOMEWORKING

Working from home requires discipline, efficient time management and a relationship of trust with your manager, peers as well as yourself and external stakeholders. Here is a job-aid to help you establish a productive work environment and successful experience working from home.

1. YOUR HOME OFFICE ENVIRONMENT

2. YOUR HOME OFFICE EQUIPMENT

3. YOUR HOME OFFICE POLICIES

4. YOUR HOME OFFICE SECURITY

5. YOUR HOME OFFICE SAFETY

6. YOUR HOME OFFICE HEALTH

7. YOUR HOME OFFICE WELL-BEING

8. YOUR HOME OFFICE PRODUCTIVITY

9. YOUR HOME OFFICE COMMUNICATION

10. YOUR HOME OFFICE COLLABORATION

11. YOUR HOME OFFICE INNOVATION

12. YOUR HOME OFFICE LEADERSHIP

13. YOUR HOME OFFICE TEAMWORK

14. YOUR HOME OFFICE RESILIENCE

15. YOUR HOME OFFICE GROWTH

PHILIPPINE QUALITY AWARD-EXCELLENCE  
QUEST FOR EXCELLENCE

SGS

EDUCATION (K-12/CE)

Accredited to meet THE-ICE Standards of Excellence

INVESTORS IN PEOPLE

COMMISSION ON EDUCATION

COMMISSION ON ACCREDITATION

MANILA • MAKATI • CAVITE



# W&LD Development programs –

LPU FB Workplace

from Shiela Marie LPU

## WORK FROM HOME ENGAGEMENT ACTIVITIES

1. Accomplish the Employee Engagement Survey.
2. Participate in the games! (Bingo, Guess the movie, Win in All Areas)
3. Watch E-Tube.
4. Share your thoughts.

### E-TUBE

March 31 | 8 am

Coach Lanie Buan  
"30-Minute Cardio Exercise"

### 2020 EMPLOYEE ENGAGEMENT

YOUR OPINION MATTERS!

Employee Engagement refers to the extent of workforce commitment, both emotional and intellectual, to accomplishing the work, mission, and vision of the organization.  
(source: PQA Manual)

### Work from Home / Home Quarantine BINGO

Movie marathon or binge watch while working	Made a tiktok video	Chikahan with friends via video call	Had 3 or more work-related calls in a day	Did the proper handwashing 10 times or more in a day
Had cravings for your favorite fast food or milktea	Fell asleep while typing/working	Keeper of the quarantine pass in the household	Prayed	Fell in a super long line in the grocery/pharmacy
Working while laying down or in the couch	Had the mic on mute while on a conference call	Ate 3 or more times in a day	Video call	Formal shirt, Boxer shorts
Logged in in the morning and then fell asleep	Woke up and was able to log in	Skits music while working	Did zumba or home workouts	
Stayed updated with the latest news and updates	Used grab or foodpanda for food deliveries	Went to grocery online	Did not shower in a day	Tried a new recipe

### GUESS THE MOVIE

Can you guess the movies on the emojis below?

First 10 to input their correct answers in the link above

1. 🍷 🏠 🧑 🧑
2. 🧑 🚗 🚗 🚗
3. 🧑 🧑 🧑 🧑
4. 🧑 🧑 🧑 🧑
5. 🧑 🧑 🧑 🧑
6. 🧑 🧑 🧑 🧑
7. 🧑 🧑 🧑 🧑
8. 🧑 🧑 🧑 🧑
9. 🧑 🧑 🧑 🧑
10. 🧑 🧑 🧑 🧑
11. 🧑 🧑 🧑 🧑
12. 🧑 🧑 🧑 🧑
13. 🧑 🧑 🧑 🧑
14. 🧑 🧑 🧑 🧑
15. 🧑 🧑 🧑 🧑

### WIN IN ALL AREAS OF YOUR LIFE

Send collated photos of yourself doing all these productive things in areas of your life and get the chance to win exciting prizes!

#### Win Physically!

(Exercise, Meditate, Eat Nutritious food)

#### Win Emotionally!

(Bond with your family, video conference with friends, )

#### Win Financially!

(Save money, Buy wisely, Donate)

#### Win Spiritually!

(Prayer, Read the Bible)

Criteria for judging: 25% - Timeliness (latest one to send), 50% - Creativity

### SHARE YOUR THOUGHTS

#### What does COVID-19 Teach You?






# LPU

LYCEUM OF THE PHILIPPINES UNIVERSITY  
MANILA • MAKATI • BATANGAS • LAGUNA • CAVITE • DAVAO



# Wellness for all

Human Resources Department  
Health Services Department



## REQUEST ONLINE CONSULTATION

With the extension of Enhanced Community Quarantine (ECQ), LPU is aware that some would need non-urgent medical attention.



**OBJECTIVES:**

1. To provide free online consultation services to all LPU stakeholders: students, academic and non-academic personnel.
2. To avoid trips to hospital for non-emergency cases, and to help decongest consultations at the emergency room.

**SCHEDULE OF CONSULTATION:**

Monday to Friday  
9:00 A.M. - 12:00 N.N.  
1:00 P.M. - 5:00 P.M.

Please use the link below:  
<http://bit.ly/HSDOnlineConsultation>



photos from John ...  
LPU Announces

# LPU SHIP

## LPU Spiritual Harmony: an Interfaith Project

**Jeremiah 17:14** Heal me, o Lord, and I shall be healed;  
Save me, and I shall be saved.

**APRIL 7  
10:00 AM**

*Lenten Recollection*  
with Fr. Dave Concepcion  
"God has been preparing us."  
Courtesy of  *TV Maria*  
The Filipino Catholic TV Channel

Log on to [bit.ly/lentrecollection](http://bit.ly/lentrecollection) and be blessed

**APRIL 14  
10:00 AM**

*Easter Talk*  
Courtesy of  **VICTORY**

Log on to [bit.ly/eastertalk14](http://bit.ly/eastertalk14) and proclaim His word

Streaming via  **Blackboard**

See you, online!





## 1.2c (1) Societal Well-being

Areas	Activities
education	<p>Flexible Learning Modality</p> <ul style="list-style-type: none"><li>• Developing LMS course modules using Blackboard Collaborate</li><li>• Frequent, regular communication<ul style="list-style-type: none"><li>• Online meetings -Blackboard Collaborate, Zoom, Microsoft Teams, FB, etc</li><li>• SMS</li><li>• Management, faculty</li></ul></li><li>• Professional development thru webinar, internal and/or external</li></ul>



# LPU

LYCEUM OF THE PHILIPPINES UNIVERSITY



LYCEUM OF THE PHILIPPINES UNIVERSITY  
Manila Campus



[HOME](#) [ABOUT US](#) [ACADEMICS](#) [ADMISSION](#) [GLOBAL](#) [RESEARCH](#) [EXTENSION](#) [LPUA](#) [CONTACT US](#)

[DEPARTMENTS](#) [CAMPUS LIFE](#) [ONLINE SERVICES](#) [EBOOKSTORE](#) [CAREERS AT LPU](#)

## Message from the VP for Academic Affairs

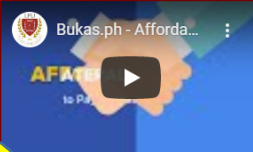


We thank you for choosing LPU and we assure you of our commitment to fully support and provide you with what you came to us for: a well-rounded, relevant education that prepares you for the future and empowers you for success.

We have a vision of becoming a leading university in the Asia-Pacific region. Further, we have a clear road map to turn this into reality. And most importantly, we are right on track and are progressively gaining headway towards this goal.

[READ MORE](#)

## LATEST NEWS



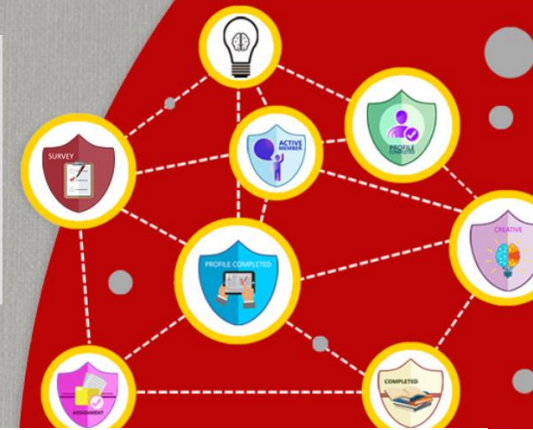
Log in

## myLPU e-Learning Portal

myLPU e-Learning Portal provides powerful tools to deliver engaging content and activities for learning online.



### Take the Lead



## Ma. Christina Aquino

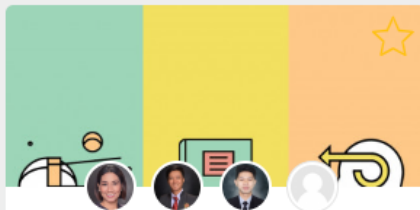
[Profile](#) - [Dashboard](#) - [Preferences](#) - [Grades](#) - [Log out](#)

CLOSE

Search

Courses

2019



myLPU Guide for Teachers

Progress: 0 / 26

0%

### IntelliBoard



Learner Dashboard



Instructor Dashboard

### Deadlines

You have no upcoming deadlines.

Refresh

[View my calendar](#)

### Grading

You have no submissions to grade.



## 1.2c (1) Societal Well-being

Areas	Activities
health	<p>Campus entry protocols</p> <ul style="list-style-type: none"><li>• Temperature scan</li><li>• Alcohol dispensers</li><li>• Face mask</li><li>• Frequent sanitation of often touched surfaces i.e. staircase bar, tables, counters, etc</li></ul> <p>Health Assessment Survey</p> <ul style="list-style-type: none"><li>• Accomplish and submit 3 days before going to the campus</li></ul> <p>Work and Learning Development</p> <ul style="list-style-type: none"><li>• Physical, Mental, Emotional</li></ul> <p>Temporary Dorms</p> <ul style="list-style-type: none"><li>• essential staff within the school</li><li>• Athletes that couldn't travel yet, moved out of dorms and into school campus temporary dorms</li></ul>



## 1.2c (1) Societal Well-being

Areas	Activities
emergency preparedness	ISO QMS <ul style="list-style-type: none"><li>• Review the risks</li></ul>
improve the practices of professional associations.	Webinars <ul style="list-style-type: none"><li>• Speakers</li><li>• Participants</li></ul>



## 1.2.c (2) Community Support

Areas	activities
Adopted community	<ul style="list-style-type: none"><li>• communicating COVID -19 advisory (e.g. status of their localities, prevention of the spread of the virus, etc.) through phone calls/ text messages, messenger (March up to now)</li><li>• Coordinated the rice donation of Assisi Development Foundation, Inc. (ADFI) to 906 IP families in four provinces (May 16)<ul style="list-style-type: none"><li>▪ Dingalan, Aurora: Dumagat 245 families</li><li>▪ General Nakar, Quezon: 242 Dumagat families</li><li>▪ Nagtipunan and Maddela, Quirino Province: 200 Agta families</li><li>▪ Maguisguis, Botolan, Zambales: 217 Ayta families</li></ul></li><li>▪ Zero Extreme Program for Indigenous persons (ZEP) that will ran until 2030</li></ul>

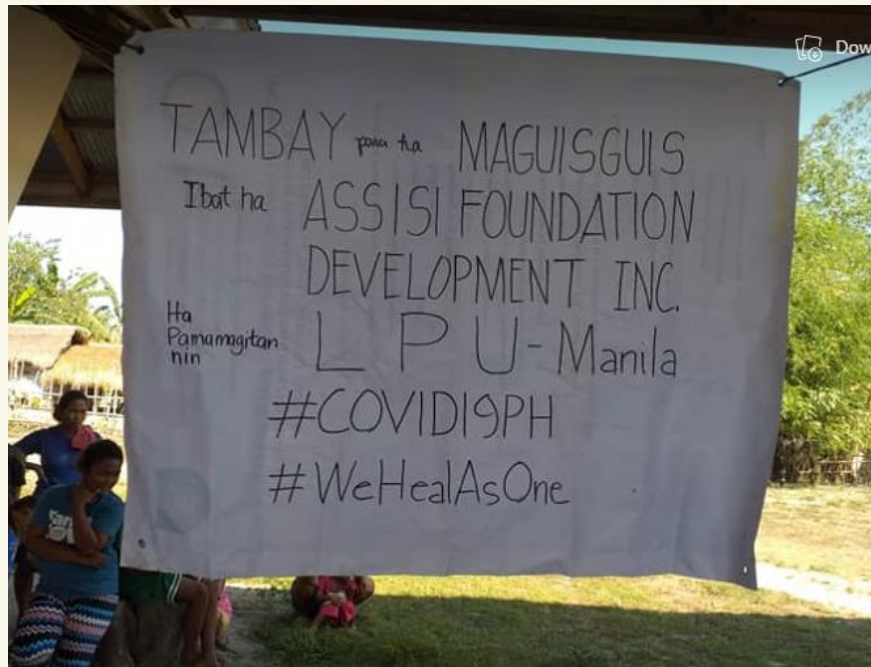




**LPU**  
LYCEUM OF THE PHILIPPINES UNIVERSITY  
MANILA • MAKATI • BATANGAS • LAGUNA • CAVITE • DAVAO



# LPU and Assisi Foundation





## 1.2.c (2) Community Support

Areas	activities
Adopted community	<ul style="list-style-type: none"><li>• Coordinated Agta Aid (Switzerland) relief donation to 42 Agta families in Diago and Dipagiden, Palanan, Isabela (June 7)</li><li>• Coordinated LPU-FLA (Foreign Languages Association) rice donation to 38 Ayta families in Patal Anawo and Kayanga. Maguisguis, Zambales (July 8)</li><li>• Facilitated and turned –over to 157 LPU agency-hired employees PHP348,516.00 proceeds from Tulong Lycean fundraising drive (April 27)</li></ul>





# LPU

LYCEUM OF THE PHILIPPINES UNIVERSITY  
MANILA • MAKATI • BATANGAS • LAGUNA • CAVITE • DAVAO







**LPU**  
LYCEUM OF THE PHILIPPINES UNIVERSITY  
MANILA • MAKATI • BATANGAS • LAGUNA • CAVITE • DAVAO



# Results

## **7.4 Leadership and Governance Results: What are your senior leadership and governance results? (80 pts.)**

Provide data and information to answer the following questions:

### **a. Leadership, GOVERNANCE, and Societal Responsibility RESULTS**

(5) **Society** What are your RESULTS for societal responsibilities and support of your KEY communities? What are your RESULTS for KEY MEASURES or INDICATORS of your fulfillment of your societal responsibilities and support of your KEY communities?





**LPU**  
LYCEUM OF THE PHILIPPINES UNIVERSITY  
MANILA • MAKATI • BATANGAS • LAGUNA • CAVITE • DAVAO



# Evaluation

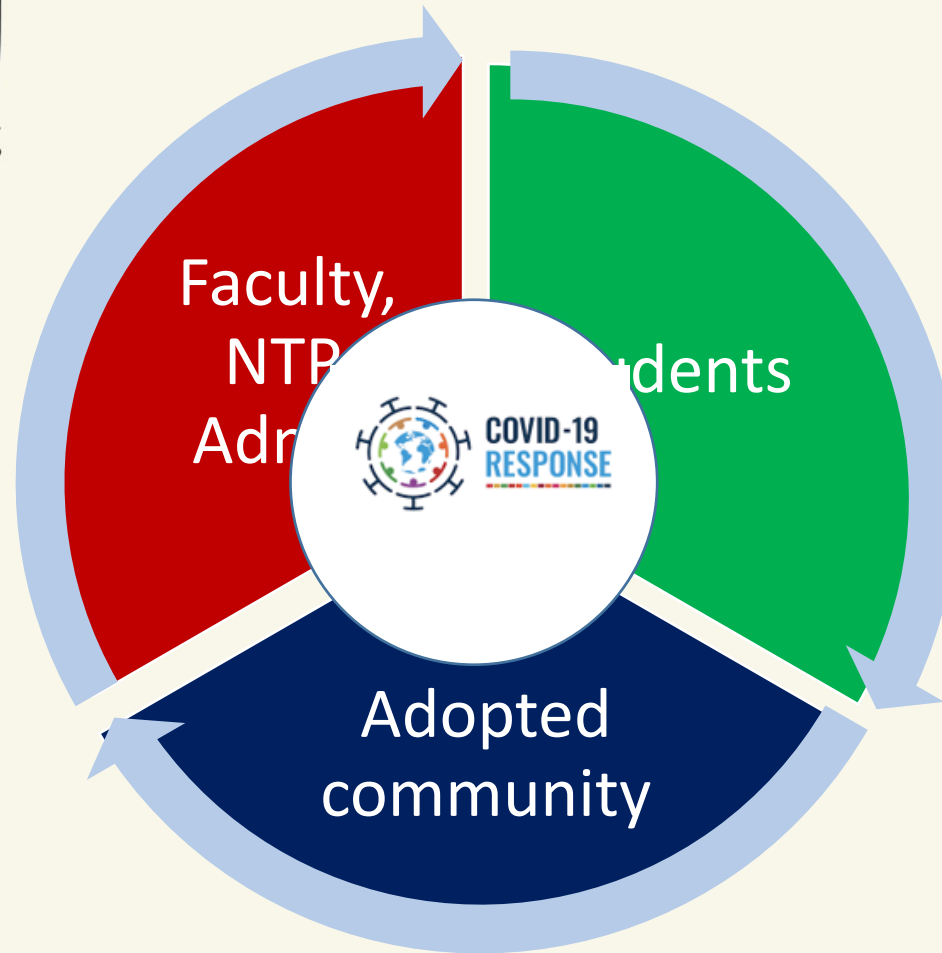
Results	Examples
Levels	Extent of Activities being done
Trends	More or less activities /people involved than last year
Comparison	Activities that other similar organizations are doing
Integration	Future performance

Document, document, document





**LPU**  
LYCEUM OF THE PHILIPPINES UNIVERSITY  
MANILA • MAKATI • BATANGAS • LAGUNA • CAVITE • DAVAO



# Best/Better/Work in Progress Practices

July 16, 2020







**LPU**  
LYCEUM OF THE PHILIPPINES UNIVERSITY  
MANILA • MAKATI • BATANGAS • LAGUNA • CAVITE • DAVAO



# *Call to Action*

COVID 19 Response Best/Better/Good  
or Work in Progress Practices

**BE HOSPITABLE**





**LPU**  
LYCEUM OF THE PHILIPPINES UNIVERSITY  
MANILA • MAKATI • BATANGAS • LAGUNA • CAVITE • DAVAO



**BE**

...

**Helpful**  
**Optimistic**  
**Systematic**  
**Practical**  
**Innovative**  
**Transformational**  
**Align with VMO**  
**Brave**  
**Lenient**  
**Evaluate/Monitor**

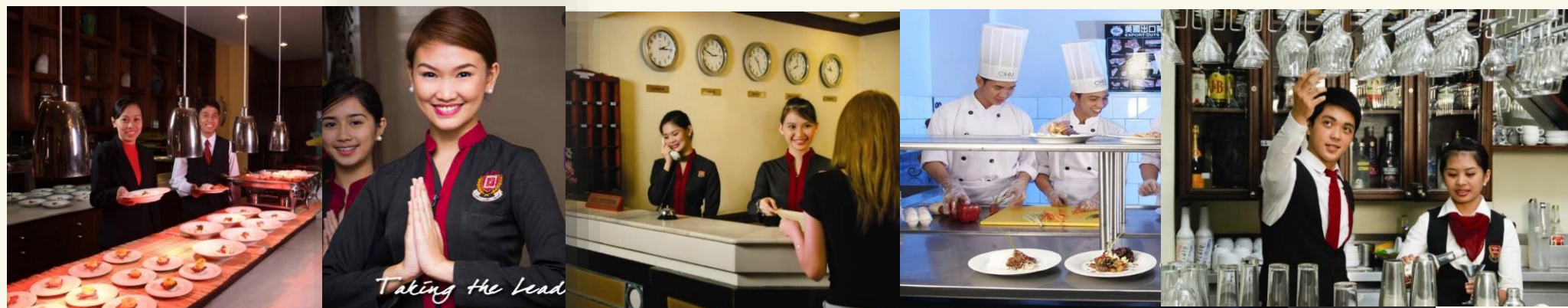


Manila • Makati • Cavite





# Performing Excellently. More fun in the Philippines



Manila • Makati • Cavite







**LPU**  
LYCEUM OF THE PHILIPPINES UNIVERSITY  
MANILA • MAKATI • BATANGAS • LAGUNA • CAVITE • DAVAO



*at your service....*

***Tina Aquino***

[christina.aquino@lpu.edu.ph](mailto:christina.aquino@lpu.edu.ph)

[mcg\\_aquino@yahoo.com](mailto:mcg_aquino@yahoo.com)

**Lyceum of the Philippines University, Manila**

**TIBFI**, Chairperson, <http://www.tourismindustryboard.org>

**THE-ICE**, Board Secretary, Director, <http://www.the-ice.org>

**HRAP**, Associate Board member, <http://www.hrap.org.ph>

**APacCHRIE**, Past President, <http://www.apacchrie.org>

**COHREP**, Immediate Past President, <http://www.cohrep.net>

